



2024 *Excellence in Masonry*



BRICK

• BLOCK

• STONE

The 2024 Excellence in Masonry Architectural Awards

A Showcase of Unprecedented
Architectural Achievement



masonryadvisorycouncil.org



Overall for Design Excellence

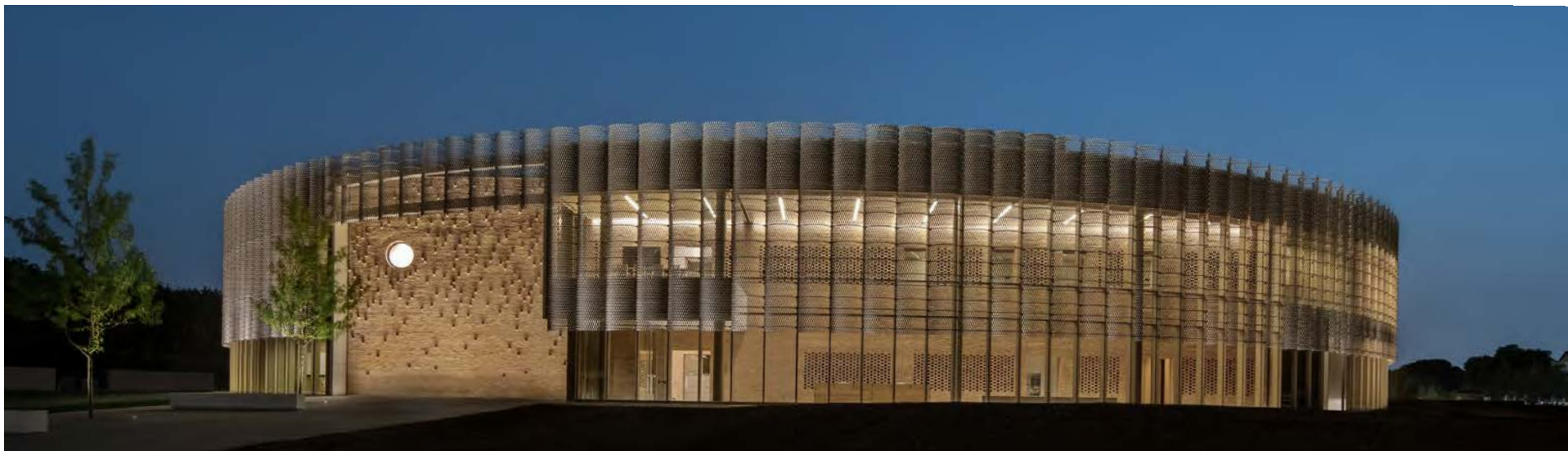
Best of Parks/Recreation

Chicago Park District Headquarters

Architect: John Ronan Architects

Mason Contractor: A.L.L. Masonry Construction Co., Inc.

Supplier: Northfield Block, an Oldcastle Company



Clarendale of Portage Park

Architect: Ryan A+E, Inc.

Mason Contractor: J&E Duff, Inc.

Supplier: Northfield Block, an Oldcastle Company; Gary Galassi Stone & Steel;
Spec Mix-Quikrete



Best of Brick





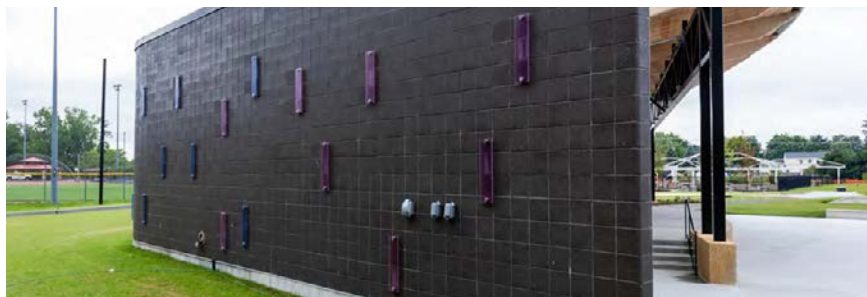
Best of Block

The Amphitheater at Mike Rylko Community Park

Architect: Legat Architects

Mason Contractor: A. Horn Inc.

Supplier: Northfield Block, an Oldcastle Company



Mokena Residence

Architect: WK Olson Architects

Mason Contractor: Mike Cachey Construction Co.

Supplier: Brickworks Supply Center; Gary Galassi Stone & Steel



Best of Stone





Craftsmanship

Kankakee Welcome Center

Architect: Fosse Architects

Mason Contractor: Kwiatkowski Masonry, Inc.





Best of Housing - Single Family

House on a Ravine

Architect: Fraerman Associates Architecture



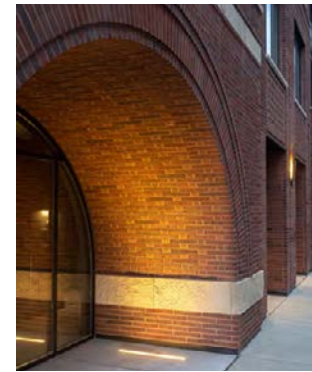
Best of Housing - Multi-Family

CA6

Architect: SGW Architecture & Design

Mason Contractor: Masonry Systems, Inc.

Supplier: Brickworks Supply Center





Best of Housing - Mixed Use

1020 W. Randolph

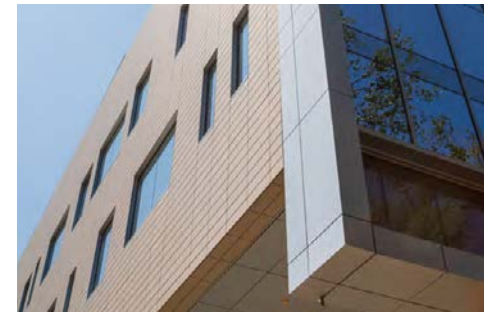
Architect: Hartshorne Plunkard Architecture
Mason Contractor: RV Builders Corp.



Best of Healthcare

Northwestern Medicine Old Irving Park

Architect: CannonDesign
Mason Contractor: A.L.L. Masonry Construction Co., Inc.
Supplier: eclad; Gary Galassi Stone and Steel

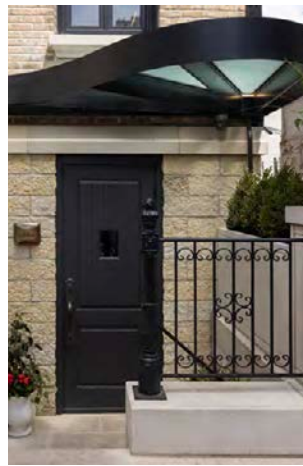
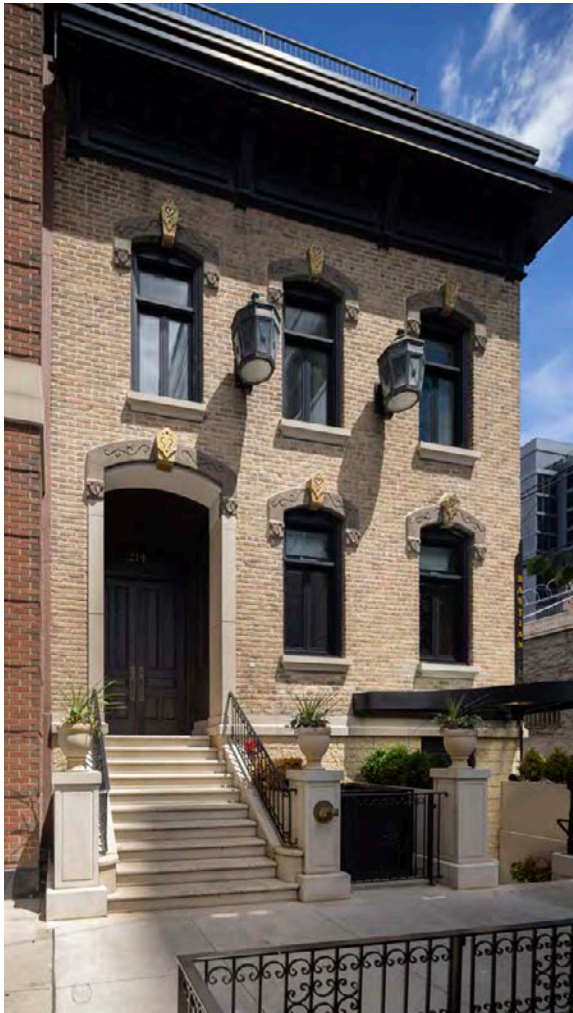




Best of Commercial

Flair House

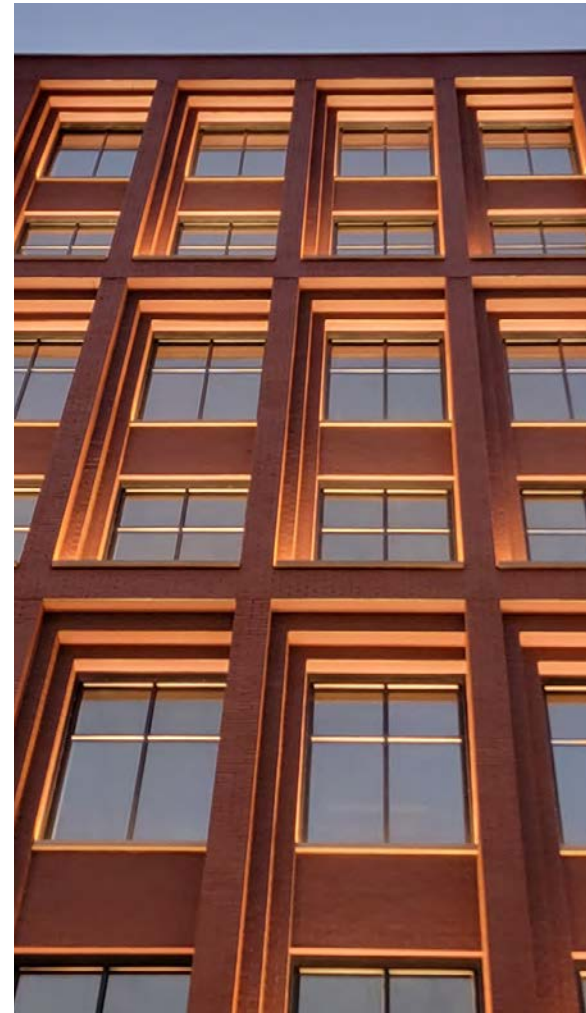
Architect: RC Bowman Architecture
Mason Contractor: Midwest Masonry, Inc.



Best of Commercial Office

Randolph Office Center

Architect: Hirsch MPG LLC
Mason Contractor: Illinois Masonry Corp.



International Union of Bricklayers and Allied Craftworkers

Congratulations 2024 Participants and Winners!

Executive Board

Michael D. Volpentesta - President
Ruben Collaz, Jr. - Secretary-Treasurer
Hector Arellano - Executive Vice President
Michael Petritis - Executive Vice President
Doug Johnston - Executive Vice President

Local Presidents

Mike Erdenberger - Local 21
Doug Johnston - Local 56
Dan Kuczkowski - Local 74
Charlie Barret - Local 79

Thank you for your continued support and Building with Masonry.



www.bacadc1.org



Best of Education

Prairie Grove School Expansion

Architect: Wight & Company

Mason Contractor: MPZ Masonry & Construction





Best of Governmental

City of Batavia Municipal Building

Architect: Allen + Pepa Architects



Best of Restoration

307 North Michigan Avenue Facade Restoration

Architect: Wiss, Janney, Elstner Associates, Inc.

Mason Contractor: Central Building & Preservation L.P.





Best of Miscellaneous

Our Lady of the Lake World Peace Plaza

Architect: Hoerr Schaudt Landscape Architects
Mason Contractor: Murphy Marble



Best of Rainscreen

Tribune Tower

Architect: SCB
Mason Contractor: Illinois Masonry Corp.





Best of Stone, Terrazzo, Granite

ORD Terminal 5 Expansion

Architect: Muller2

Mason Contractor: Menconi Terrazzo

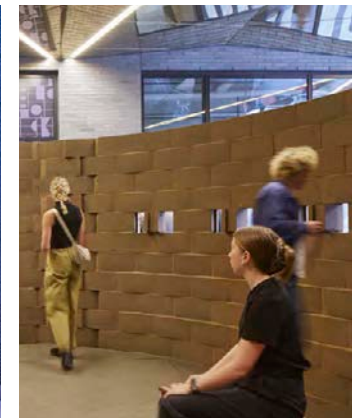


Best of Sustainability

Bio-Block Spiral Installation

Architect: Skidmore, Owings & Merrill

Mason Contractor: J&E Duff, Inc.



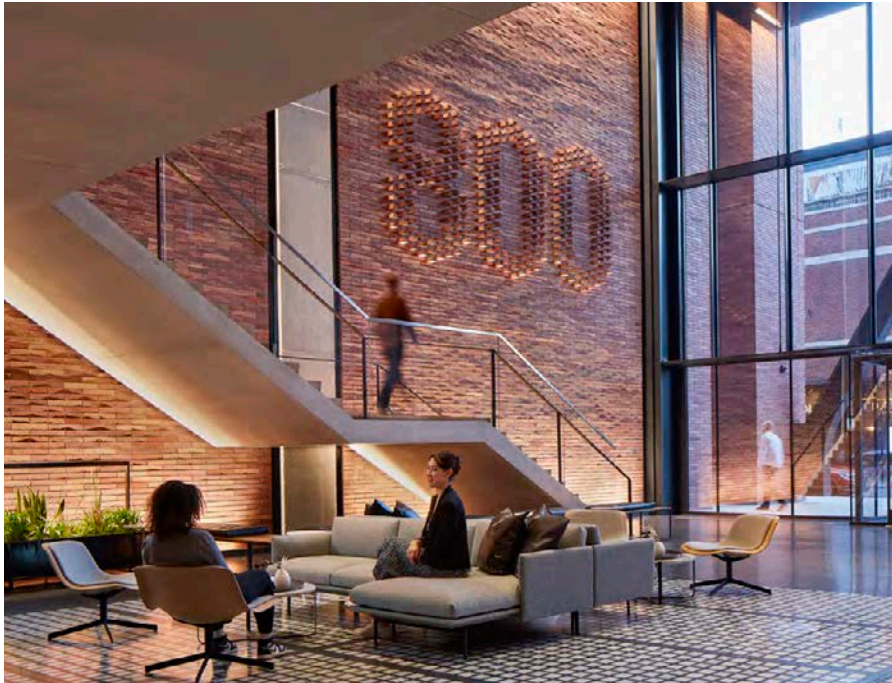


Best of Interior

800 Fulton Market

Architect: Skidmore, Owings & Merrill

Mason Contractor: Menconi Terrazzo; J&E Duff, Inc.



We salute this year's participants
and all of the magnificent projects in the
2024 Excellence in Masonry Awards
Competition

We thank you for your
support and inspiration
and look forward to
working with you
in the future.



Sand Creek Residence

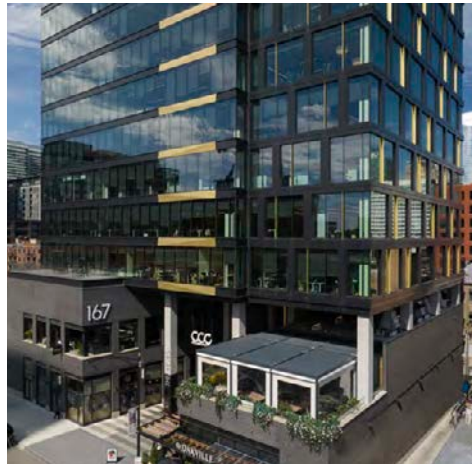
Mason Contractor: Kwiatkowski Masonry, Inc.
Supplier: Brickworks Supply Center

Project Submissions



Spectre

Architect: Gensler
Mason Contractor: Midwest Masonry, Inc.
Supplier: Northfield Block, an Oldcastle Company; Brickworks Supply Center



Ramova Theatre

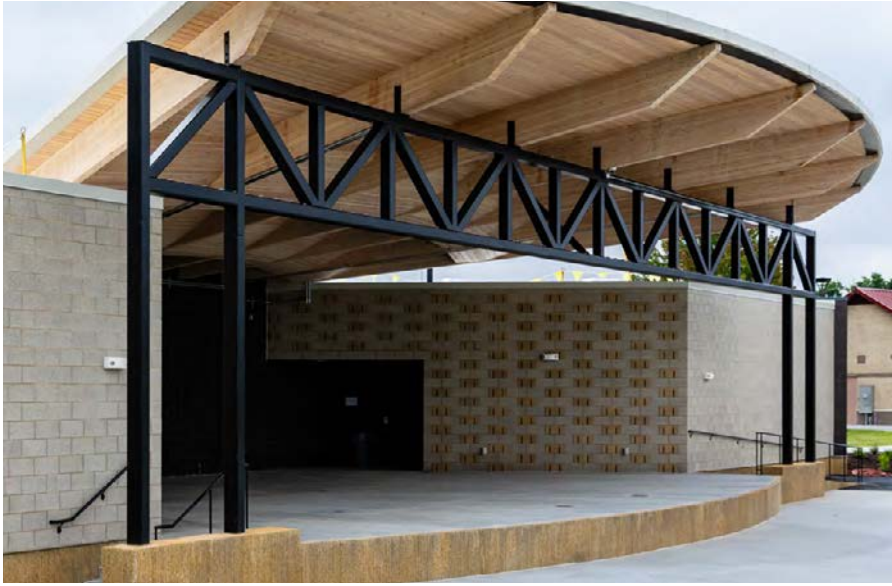
Architect: O'Riley Office, LLC
Mason Contractor: Central Building & Preservation L.P.; MBB Enterprises
Supplier: Brickworks Supply Center; Spec Mix-Quikrete



Howard Brown Health Center

Architect: Echenhoff Saunders Architects
Mason Contractor: Illinois Masonry Corp.
Supplier: Northfield Block, an Oldcastle Company





Masonry Through and Through

The Enduring Craft and Its Modern Applications

Celebrating "Excellence".
A Salute to the Architects and Craftsmen
Behind These Outstanding Projects.



ECHELON®
MASONRY

Whatever your vision, you can see it through with Echelon,
your local single-source masonry solution.

echelonmasonry.com

Chipotle - Des Plaines

Architect: KMA

Supplier: Northfield Block, an Oldcastle Company



Addition to Crete-Monee High School

Architect: Healy Bender Patton & Been Architects

Mason Contractor: Ramcorp, Inc.

Supplier: Northfield Block, an Oldcastle Company



210 Aberdeen

Architect: NORR

Mason Contractor: Mike Cachey Construction Co.

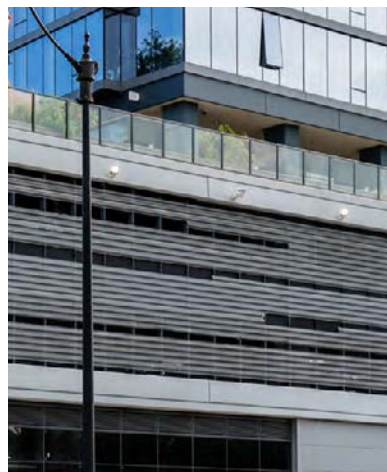
Supplier: Gary Galassi Stone & Steel



Aspire Residences

Architect: ESG Architecture & Design

Supplier: Northfield Block, an Oldcastle Company



Oak Trace Residential Living Tower

Architect: SAS Architects and Planners

Mason Contractor: Mastership Construction Co., Inc.

Supplier: Northfield Block, an Oldcastle Company



1100 W. Polk

Architect: Hanna Architects



400 N. Aberdeen

Supplier: Northfield Block, an Oldcastle Company



Pet Suites Schaumburg

Architect: Charles Vincent George Architects

Supplier: Brickworks Supply Center



1600 S. Ashland

Architect: Hanna Architects



Park Station

Architect: Fitzgerald Associates

Mason Contractor: R.E.A. Masonry, LLC.

Supplier: Brickworks Supply Center



Legacy 202

Architect: Mode 3 Architecture

Supplier: Brickworks Supply Center



Neiswander Memorial

Architect: McCloud & Associates Architecture

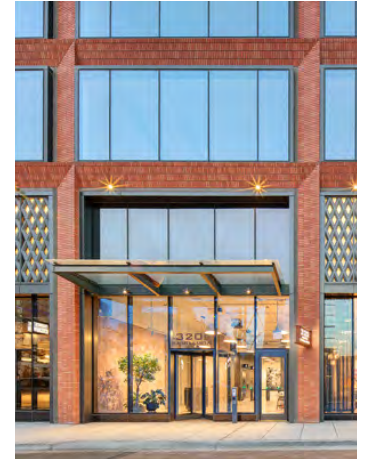
Mason Contractor: JMI 2 Corp.



320 N. Sangamon

Architect: SCB

Supplier: Northfield Block, an Oldcastle Company



Hawthorn Woods Community Bank

Architect: Grund & Riesterer Architects, Inc.

Mason Contractor: Ebben Masonry Inc.

Supplier: Brickworks Supply Center; Gary Galassi Stone & Steel



1538 Walnut Ave.

Architect: Donald J. Hackl, FAIA



Albion Highland Park

Architect: Hartshorne Plunkard Architecture
Mason Contractor: Midwest Masonry, Inc.



Wishy-Washy Car Wash

Architect: Neri Architects
Supplier: Brickworks Supply Center; Gary Galassi Stone & Steel



Wallin Oaks Elementary School

Architect: Healy Bender Patton & Been Architects
Mason Contractor: Midwest Masonry, Inc.
Supplier: Brickworks Supply Center



Oak Park and River Forest High School Project 1

Architect: FGM Architects

Mason Contractor: Cyberdyne Masonry Corporation

Supplier: Northfield Block, an Oldcastle Company



Will County Coroner Facility

Architect: Wight & Company

Mason Contractor: R.D. Masonry, Inc.

Supplier: Brickworks Supply Center



Romeoville Aquatic Center

Architect: Dewberry

Mason Contractor: Able Masonry Development

Supplier: Northfield Block, an Oldcastle Company



Advanced Outpatient Center South Elgin

Supplier: Northfield Block, an Oldcastle Company



Mason Contractors Association of Greater Chicago

Blazing a Trail in Masonry



We Salute You!

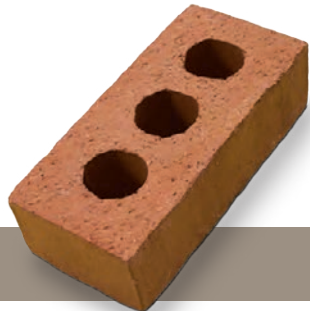
Thank you to all entrants for submitting the many outstanding architectural examples of masonry built in and around the Chicagoland and NW Indiana area.

MCAGC is the association of, by, and for the Mason Contractors

chicagomasons.org



Mason Contractors Association
of Greater Chicago



Cooper's Hawk

Architect: ARIA

Mason Contractor: R.D. Masonry, Inc.

Supplier: Brickworks Supply Center



Woodridge Police Department & Public Works

Architect: StudioGC Architecture & Interiors

Mason Contractor: Midwest Masonry, Inc.

Supplier: Northfield Block, an Oldcastle Company



2411 N. Lincoln Ave.

Architect: Studio Dwell Architects

Supplier: Brickworks Supply Center



1600 S. Ashland

Architect: Hanna Architects



Loyola Piper Sullivan

Architect: **SmithGroup**

Mason Contractor: **Mike Cachey Construction Co.**

Supplier: **Gary Galassi Stone & Steel**



Hanover Park Fire Station 16

Architect: **Dewberry**

Mason Contractor: **Ebben Masonry Inc.**

Supplier: **Brickworks Supply Company; Northfield Block, an Oldcastle Company**



Gower West School

Architect: **Green Associates**

Mason Contractor: **JAC Masonry, Inc.**

Supplier: **Brickworks Supply Center**



The ASH

Architect: **Hanna Architects**



The Platform

Architect: Pappageorge Haymes Partners
Mason Contractor: Illinois Masonry Corp.



Rush Specialty Center

Mason Contractor: A.L.L. Masonry Construction Co., Inc.



City of Highland Park Fire Station # 32

Architect: Williams Architects
Mason Contractor: JAC Masonry, Inc.
Supplier: Northfield Block, an Oldcastle Company



Salesforce Tower

Architect: HKS, Inc.
Mason Contractor: A.L.L. Masonry Construction Co., Inc.
Supplier: Northfield Block, an Oldcastle Company



Journeyman Distillery

Architect: **RATIO Design**

Mason Contractor: **Kwiatkowski Masonry, Inc.**

Supplier: **Brickworks Supply Center; Spec Mix-Quikrete**



Frankfort SD 157c Chelsea Intermediate School

Architect: **FGM Architects**

Mason Contractor: **Iwanski Masonry**

Supplier: **Brickworks Supply Center**



Clissold Elementary School

Architect: **Wallen-Gomez Architects, Ltd.**

Mason Contractor: **Vimak Construction & Masonry**

Supplier: **Brickworks Supply Center; Northfield Block, an Oldcastle Company, Inc.**



Western Bloc

Architect: **Hanna Architects**



Jackson Park Mobility Improvement - Bridge Restoration and Rebuild

Architect: JLK Architects

Mason Contractor: A.L.L. Masonry Construction Co., Inc.



NM Winfield Town Center Medical Office Building

Architect: Gresham Smith

Mason Contractor: J&E Duff, Inc.

Supplier: Spec Mix – Quikrete



Queen Bee District Office

Architect: FGM Architects



Paisans Pizzeria

Architect: JP Architects, Ltd.

Supplier: Brickworks Supply Center



Revere Park Fieldhouse

Architect: **Simple+Rappe Architects**

Supplier: **Brickworks Supply Center; Rauch Clay Sales**



Roxana Municipal Campus

Architect: **FGM Architects**

Mason Contractor: **A. Horn Inc.**



345 Morgan Fireplace

Architect: **Eckenhoff Saunders Architects**

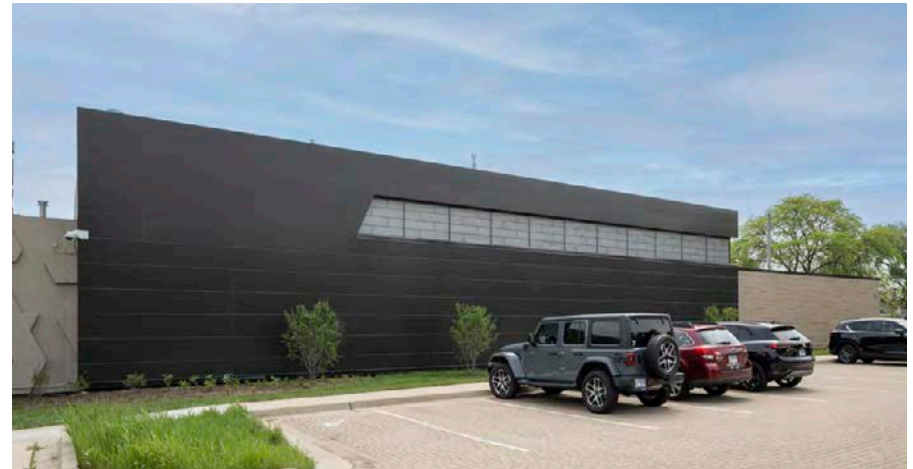
Madson Contractor: **Illinois Masonry Corp.**



Village of Lombard Fleet Services Additions and Renovations

Architect: **TRIA Architecture**

Madson Contractor: **Ebben Masonry, Inc.**



CPS Belmont-Cragin Elementary School

Architect: **SMNG A, Ltd.**

Mason Contractor: **Vimak Construction & Masonry**



440 Hawley

Architect: **Hezner Corporation**

Mason Contractor: **Midwest Masonry, Inc.**

Supplier: **Brickworks Supply Center**



The Iowan

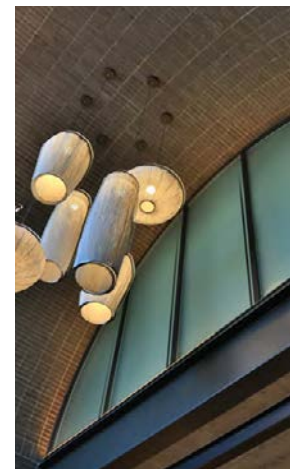
Architect: **Hanna Architects**



345 Morgan

Architect: **Eckenhoff Saunders Architects**

Mason Contractor: **Illinois Masonry Corp.**



1710 S. Halsted

Architect: Hanna Architects



Matteson STEM Lab

Architect: TRIA Architecture

Mason Contractor: A.L.L. Masonry Construction Co., Inc.



Downers Grove Civic Center

Architect: FGM Architects

Mason Contractor: Able Masonry Development

Supplier: Brickworks Supply Center



Sauganash Elementary

Architect: Rada

Mason Contractor: Illinois Masonry Corp.

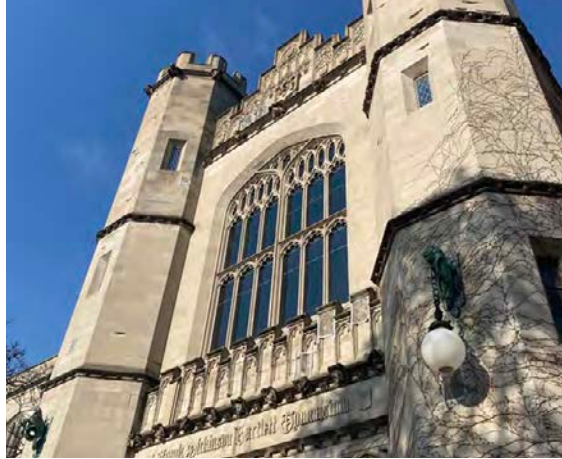


Bartlett Hall Dining Commons Exterior Repairs

Architect: Inspec, Inc.

Mason Contractor: Berglund Construction

Supplier: Gary Galassi Stone & Steel



Dupage County Historical Museum Masonry Facade Improvements

Mason Contractor: Berglund Construction

Supplier: Gary Galassi Stone & Steel



CREATING A BETTER BUILT WORLD STARTS HERE.

Team IMI provides free technical support and education to empower you to build responsibly.

» Design Assistance

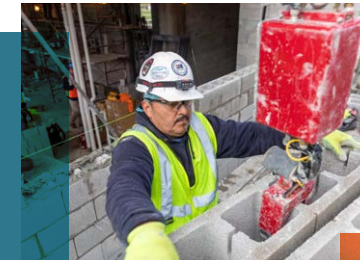
- Drawing and specification review
- Structural masonry design support
- Masonry detailing

» Education

- Webinars and seminars: AIA HSWs
- Hands-on material workshops

» Project Support

- Qualified union contractors and installers
- Job site troubleshooting



IMIWEB.ORG

Congratulations

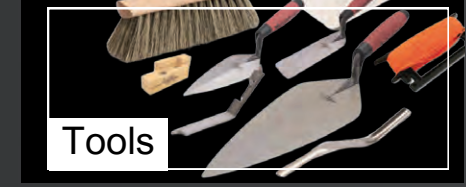
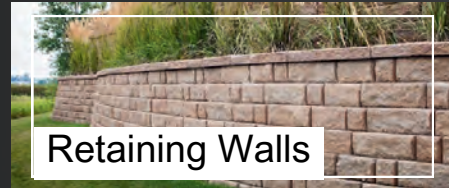
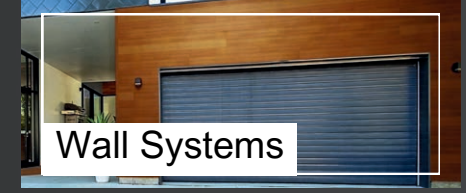
to all the nominees and winners
from your friends at

BRICKWORKS
SUPPLY CENTER®

26 Locations Nationwide
6 in Chicagoland:
Bridgeview • Chicago • Des Plaines
Naperville • New Lenox • Schaumburg

www.BrickworksSupply.com

Whatever your project, we've got you covered.



and more...